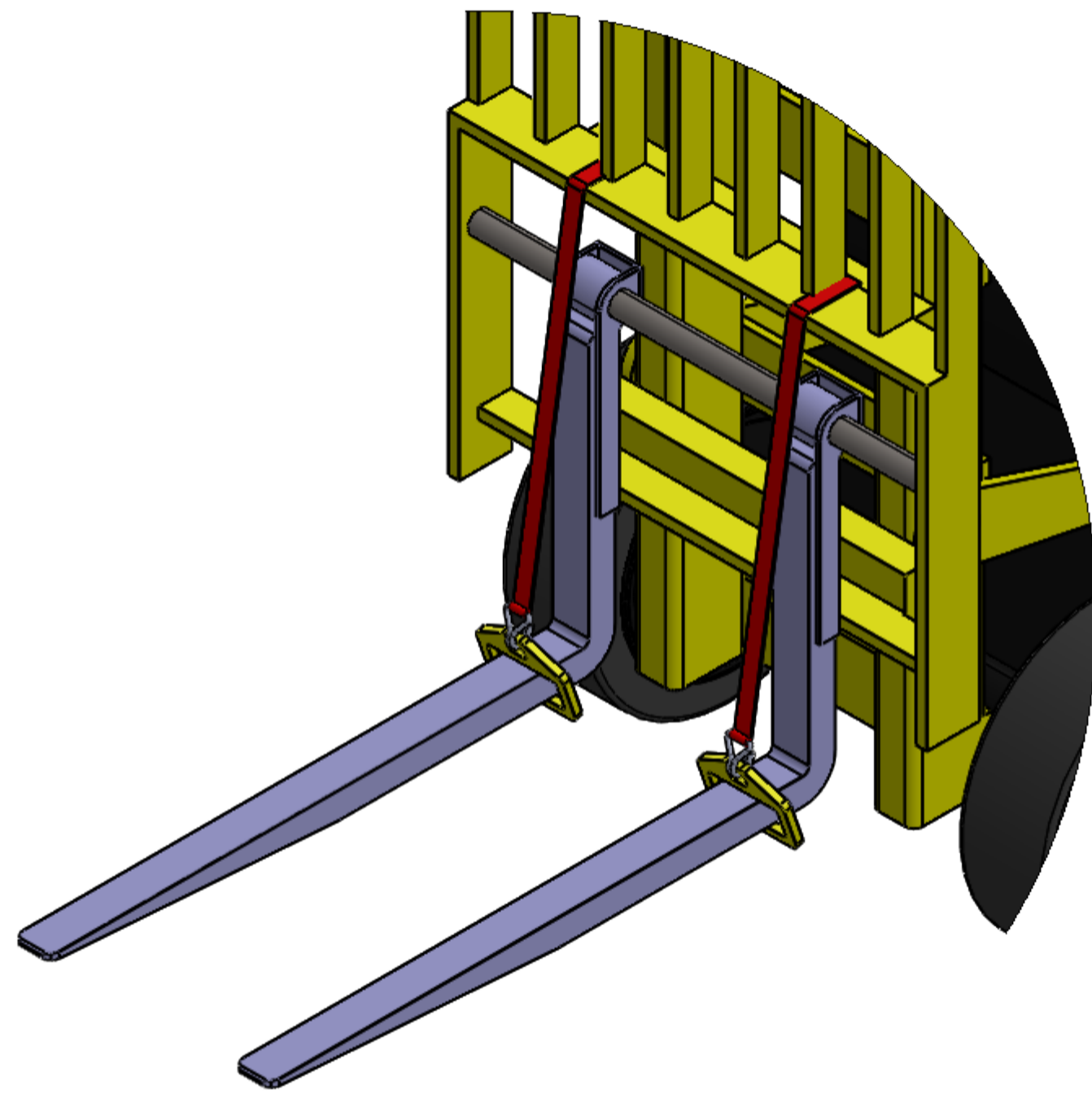
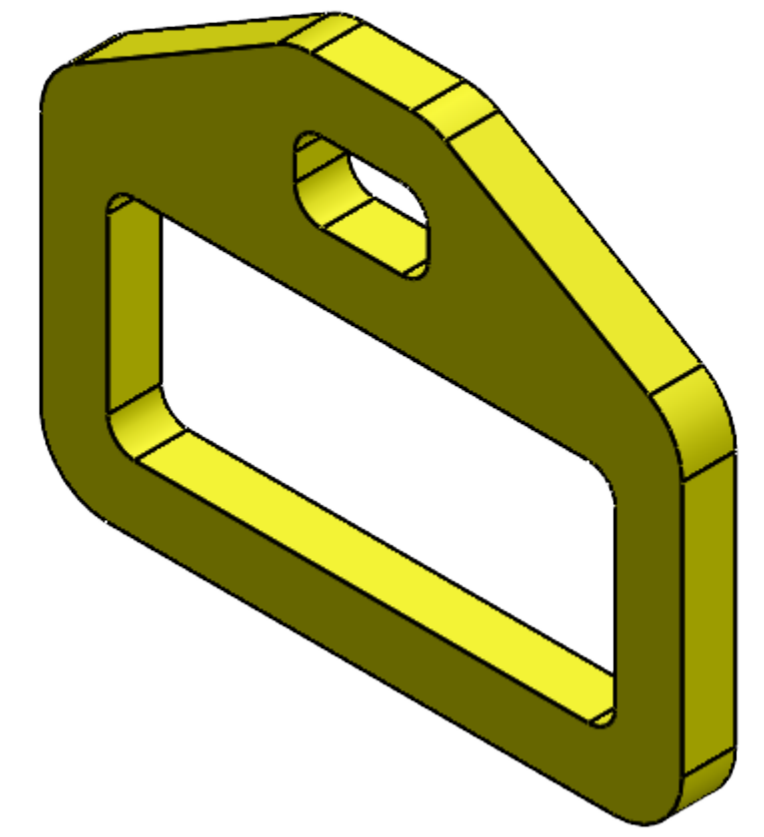
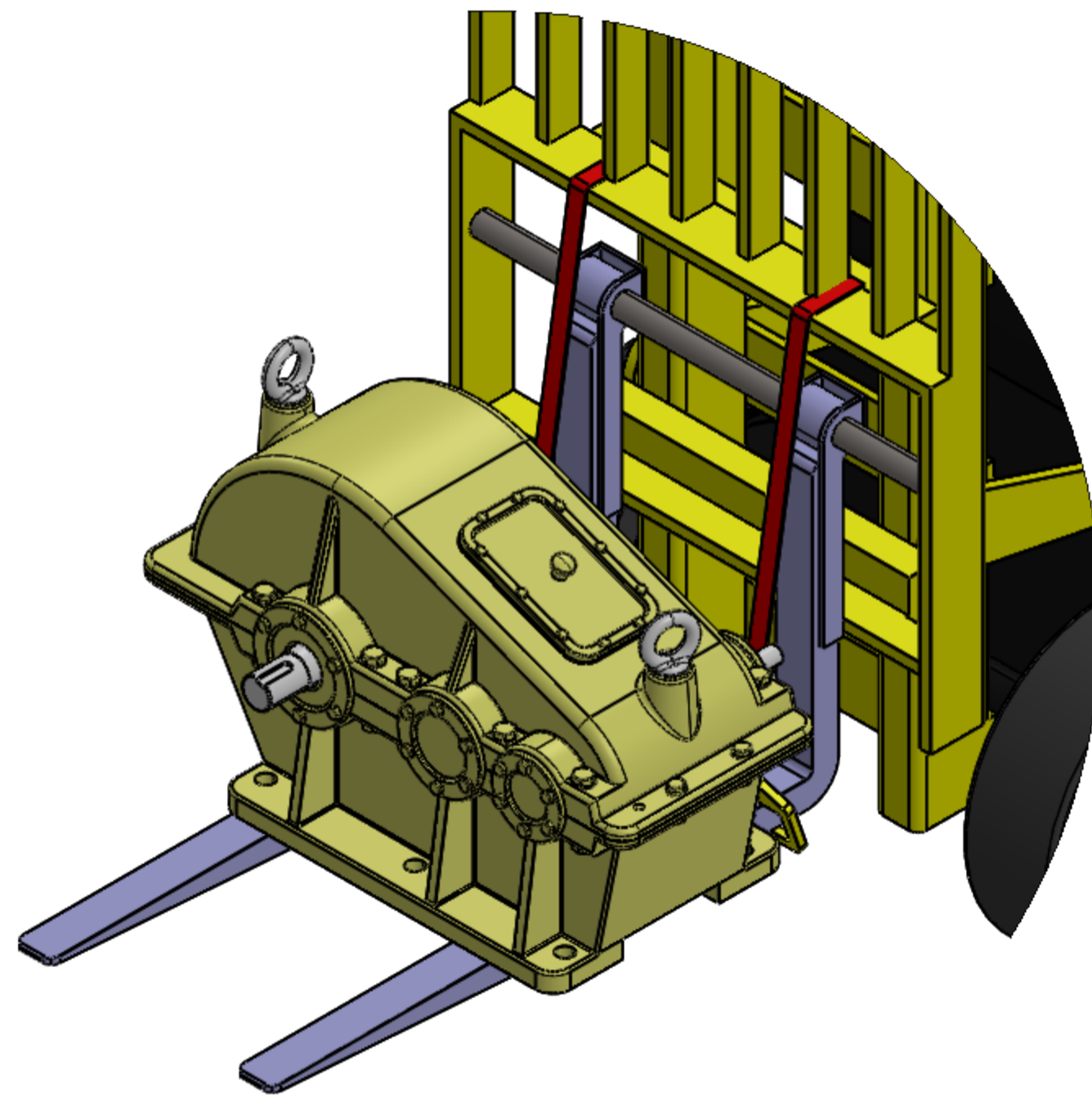


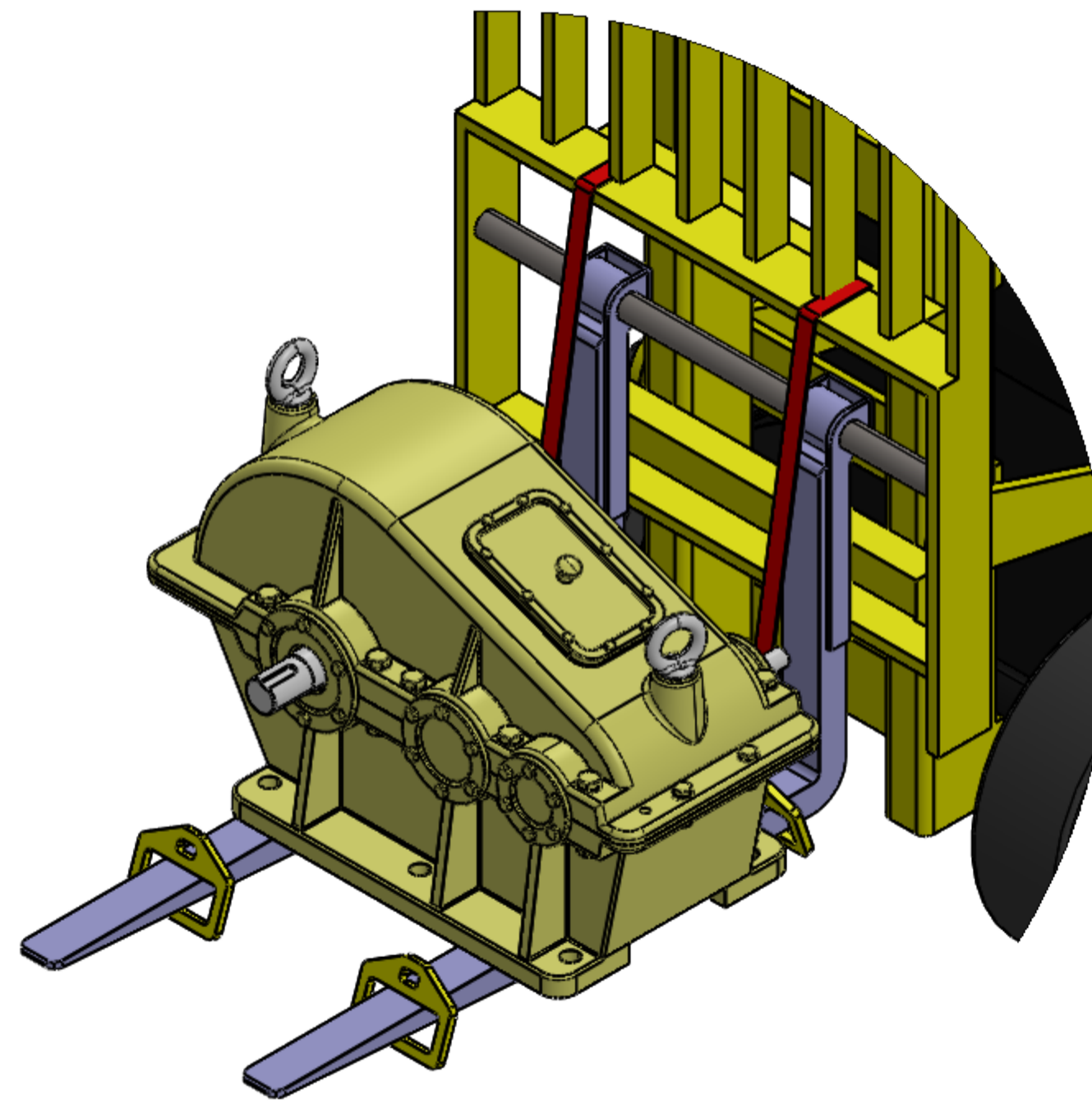
- Design
1. Design Code AS4991:2004
 2. Designer - Halo Tech Pty Ltd
 3. Certifier - Stuart Nawrath RPEQ No. 6553
 4. NOT TO BE USED FOR LIFTING - LOAD RESTRAINT ONLY
 5. MUST TO BE USED AS A SET (4 X CLAMPS)



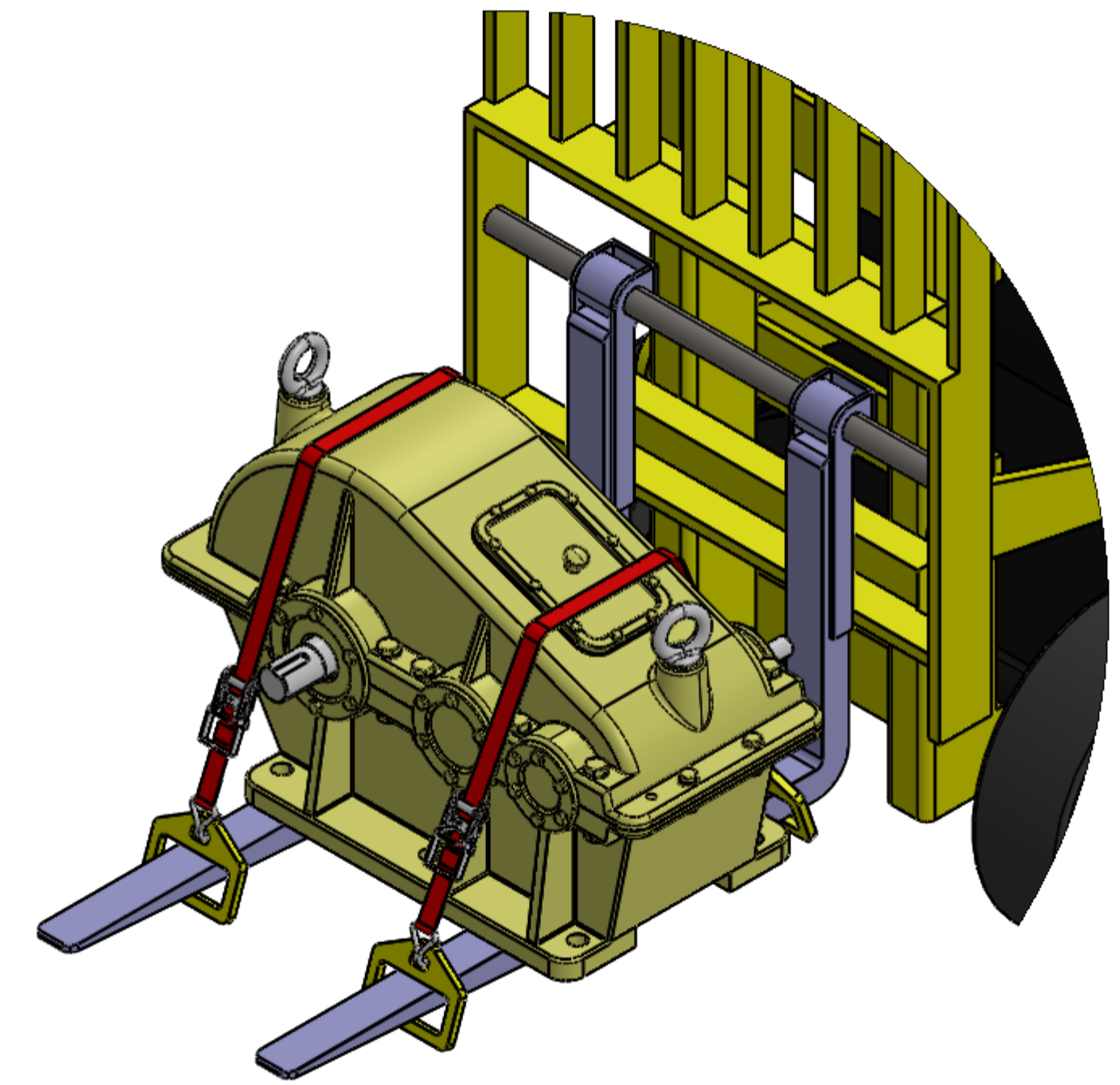
STEP 1 - INSTALL 1 x CLAMP PER FORKLIFT TINE AS CLOSE AS PRACTICABLE TO THE HEEL. INSTALL LOOSE STRAPS FROM THE CLAMPS TO THE LOAD BACKREST



STEP 2 - PLACE LOAD ONTO THE FORKLIFT TINES INFRONT OF THE CLAMPS.



STEP 3 - INSTALL 1 x CLAMP PER FORKLIFT TINE INFRONT OF THE LOAD.



STEP 3 - ADJUST THE POSITION OF THE CLAMPS TO SUIT THE LOAD AND STRAP/CHAIN APPROPRIATELY. ENSURE THE STRAP/CHAIN TENSIONER IS INFRONT OF THE LOAD.



No.	MOD/PROJ#	DRN	DRN/CH	INITIAT	ENG	AUTH	RPEQ#	DATE	REFERENCE DRAWINGS	DRG No.
1		RS					6553	04/2025		
0		RS					6553	04/2025		
REVISION DETAILS										

THIS DRAWING IS A PRIVATE AND CONFIDENTIAL COMMUNICATION AND THE PROPERTY OF HALO TECH PTY, LTD BEING RETURNABLE UPON REQUEST. IT MUST NOT BE COPIED OR LOADED WITHOUT THE CONSENT OF THE COMPANY. IF IN DOUBT ASK

NOTES:		SPECIFICATIONS		DRAWN		WORKS		TITLE	
		MATERIAL AS PER CLAMP DRAWING		RS		GLADSTONE		FORKLIFT CLAMP - INSTALLATION INSTRUCTIONS	
		FINISH		CHECKED		PLANT			
		DIMENSIONS ARE IN MILLIMETERS UNLESS OTHERWISE SPECIFIED.		INITIATOR		SECTION			
		THIRD ANGLE PROJECTION		ENGINEER		MOD/PRJ No.			
		UNSTATED TOLERANCES		AUTHORISED		RPEQ#			
		LINEAR		SN		6553			
		0 DEC PLACES ± 0.5mm		DATE		04/2025		SHEET SIZE	
		1 DEC PLACE ± 0.1mm		ISSUED FOR CONSTRUCTION				A1	
		2 DEC PLACES ± 0.05mm		DRAWING NUMBER		LFRCL-ASSEMBLY-R0		SHEET REV 1	
		ANGULAR		1 DEC PLACE ± 1.0°		1 DEC PLACE ± 0.5°		SW DRAWING	
		0 DEC PLACES ± 1.0°		1 DEC PLACE ± 0.5°		2 DEC PLACES ± 0.1°			